

LOCAL LIFE

The number one local choice

Media Information

The fresh new look of Local Life magazine is fast becoming the **media of choice** in the St Helens and Wigan areas for hundreds of local, regional and national advertisers.

Each magazine carries at least **40% editorial content**, and in addition to community news, we feature **entertaining profiles** of local people and local community groups, **local history** and walks, a what's on guide and **everything a reader needs to know** about their local community.

It's no wonder that a recent survey showed that **over 72% of readers retained Local Life** until the next issue arrived!

Our A5 sized full colour magazines, which are produced by a team with **decades of experience in media and marketing**, have proved since 2007 that we can be **incredibly effective** in promoting your business or organisation to potential customers.

Isn't it time you joined a winning team? Call us now on 01744 649722 or 01695 627999 and see how we can help you develop your business!

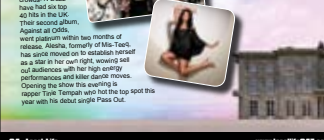


Key Features

- The leading local magazines published by the area's largest magazine publisher.
- Local Life is delivered to over 51,000 private homes in some of South Lancashire's most affluent areas.
- Over 2,500 copies a month placed for collection at leading Tesco and Sainsburys stores
- Cost effective advertising that is proven to work, time and time again!
- Series bookings discounts available offering even better deals for regular advertisers.

Editorial Content

- Community news
- Restaurant reviews
- Local walks
- Great competitions
- Local history
- Gardener's Diary
- What's On



34 Local Life

www.locallife247.co.uk

www.locallife247.co.uk

Local Life 35

Wednesday 7th	Katharine Jenkins	8.30pm	£33.00	
Thursday 8th	The Saturdays	7.30pm	£27.50	
Friday 9th	Ronin Keating	TBC	8.00pm	£32.00

To buy tickets call Ticketmaster on 0844 472 386 or visit www.ticketmaster.co.uk
 *Please note that prices quoted do not include booking fees (£2.14-3.26 per seat)
 **VIP experiences are available for Katharine Jenkins, The Saturdays and Ronin Keating. For further details visit www.wct.org.uk/concerts/corporate/ or call 01942 825 677

Jack's Tracks

Thousands of cars a week whizz through Roby Hill and up Mill Lane/Blosser Lane (near Up Holborn), and yet in the area between these two busy roads lies the very essence of England! Wooded rivers, along single track lanes, working farms, beautiful houses, a couple of country pubs, a cricket pitch and lots of other points of interest. This is a 4.1 mile walk, with a few steep parts, but nothing too strenuous; just perfect for a Sunday afternoon!

Roby Hill - Stone Hall Lane
 Parks on School Lane, the road right next to the Fox. From School Lane turn right onto the main road through the village and after 175 yards take the first left into Farley Lane. After walking up an incline for almost 600 yards you'll come to a house on the right called Stoneacre. There are two public footpaths here, one to the right of Stoneacre and the other on the left. Take the one on the right, which goes through what looks like a garden gate. As soon as you go through the gate, head to the left in the direction of another house then take the path to the left of this gate.

Go down the path, past the assorted livestock, and you'll come to a field. Follow the path down the left hand perimeter of the field for approximately 150 yards and you'll eventually come to a stile. Go over the stile and twenty yards further on you'll happen upon a track. Turn left and head up the track, passing some cars on the right hand side in Lees Wood.

Follow that track for approximately 275 yards. The track bends to the left and you'll arrive at a turning gate. Don't go through the gate, instead turn right just a few yards, where the gate is and hop over some old stones into a field. Walk for 200 yards down the left hand perimeter of the field, on the right in the distance you'll spot the majestic silhouette of Farford Hall. Once you've reached the bottom left hand corner of the field, turn left and head up a very rough track which is known as Stone Hall Lane.

Stone Hall Lane - Ashurst
 Turn left on Stone Hall Lane and then, after just 50 yards, turn left a right turn at the gate and go up the slope, dropping into a small wooded stream. Follow the stream and go up the other side of the bank, going through a gate en route. Follow the clearly defined pathway for a total of 250 yards and you'll pass through the farm gate, but at the second gate you'll need to turn left and follow the pathway around the perimeter of Barings Farm. As you pass the farm (and the road) on the right hand side, you'll spot a gate in the right hand corner near the farm's driveway. Go through this gate and follow the drive up a slight incline until you reach a single track road called Long Heys, sometimes known as Black Lane.

Turn left at Long Heys and walk up the single track road for a total of 300 yards. You'll pass Carterell's Farm on the left and just after a right hand bend you'll see a footpath running across Long Heys, but at a higher level. Turn right and go up the stone steps onto the footpath. Follow the clearly defined footpath round a dog leg bend for 200 yards, eventually turning parallel to a brook.

36 Local Life

www.locallife247.co.uk

www.locallife247.co.uk

Local Life 37

BorronShaw

Your local Estate Agent

2 Salford Road, Ormskirk, WMS SUP
 Call - 01695 632123
www.borronshaw.co.uk

Open Day Saturday 9th April
Higher View, Up Holland
 A rare opportunity to become one of the area's finest modern family homes. This beautiful, spacious property in Higher View, which is located in a sought after area, boasts a large 1/2 acre garden, which is landscaped in Higher View, consists of a large detached house and has a modern view of Worsley Hill, the Pennines and the Peak District.

Set out on three levels, this spacious and well maintained property has 3 exceptionally large double bedrooms two of which have en-suites, a single bedroom, 2 reception rooms, kitchen, study, utility room and a family bathroom. Fully double glazed with gas central heating, the property is fitted with an alarm and also has CCTV.

The landscaped rear garden, which is set out on three levels, offers a good degree of privacy and is a welcome in the neighbourhood. The garden includes a pond, pergola, patio and outdoor furniture and is perfect for outside entertaining. At the rear of the garden there is a detached double garage with additional parking for a further two cars.

This exceptional property really has it all and is sure to be appreciated, and therefore those who are looking for an open day at the property next Saturday (9th April), between 9.30-12pm, if you're interested in viewing this exceptional property, please contact Borron Shaw on 01695 632123 or for further details visit www.borronshaw.co.uk.

Offers in the region of £299,000.

Just Reduced by £20,000

The What's On Guide

Saturday 3rd July
St Helens Festival
 Don't miss the 10 weekend Festival in Shadley Park! This 10 day event has something for everyone and gets better every year! Motorbike stunt shows, dog displays, punts and jolly circus skills workshops, street entertainers, break dancing competition, go kart, cades, coaching by Barrie stars, bouncy castles, equestrian and motor displays and just a small selection of what's going on at the St Helens Festival.
 Time: From 12 noon to 6pm at St Jrdan's 4th July
 Cost: Free
 Contact: 01744 475306 or www.whatshelens.com

Sunday 4th July
Summer Gala
 St John's School annual summer gala takes place at the school on Howards Lane in Eccleston.
 Time: 1.30pm
 Cost: 50p for adults, children up to 12 go free
 Contact: 01744 730128
 Sat Nav Ref: WA10 8HG

Rainford Walk
 Rangers lead a 2 hour walk through countryside round Rainford. Please wear suitable clothing and footwear. Meet at Inghenova Farm, just off the Rainford by pass. Also on Thursday 21st July at the same time.
 Time: 1pm & 1.30pm
 Cost: free
 Sat Nav Ref: WA15 8AE

Friday 9th July
Festival of British Music
 Festival of British Music at St Helens Town Hall by the St Helens Symphony Orchestra consisting of The Wipers by Vaughan Williams, Cello Concerto by Elgar, Somerset Rhapsody by Holst and Symphony No. 2 by Arnold.
 Time: 7.30pm
 Cost: £15 - Accompanied U-16's £11, students (with card) £7.50
 Contact: 01744 600640 or 01625 291273
 Sat Nav Ref: WA10 1HP

Monday 5th July
Wigan Live Tenor's Concerts
 A fantastic line up of artists appearing at what is simply one of the biggest music events in the North West this summer: Ronin Keating, Moby, Katharine Jenkins, Alesha Dixon, N. Wiggins, J. D'Uze and The Saturdays will be performing at a series of concerts at High Hall, near Wigan, running from Monday 5th to Friday 9th July.
 Time: Varies between 6pm-8pm depending on day
 Contact: 0844 847 2386 or www.ticketmaster.co.uk
 Sat Nav Ref: WA12 1PE

Thursday 8th July
Rainford Farm Walk
 Rangers lead a 90 minute walk, followed by a 2 hour walk through countryside round Rainford. Please wear suitable clothing and footwear. Meet at Inghenova Farm, just off the Rainford by pass. Also on Thursday 21st July at the same time.
 Time: 1pm & 1.30pm
 Cost: free
 Sat Nav Ref: WA15 8AE

Friday 9th July
Festival of British Music
 Festival of British Music at St Helens Town Hall by the St Helens Symphony Orchestra consisting of The Wipers by Vaughan Williams, Cello Concerto by Elgar, Somerset Rhapsody by Holst and Symphony No. 2 by Arnold.
 Time: 7.30pm
 Cost: £15 - Accompanied U-16's £11, students (with card) £7.50
 Contact: 01744 600640 or 01625 291273
 Sat Nav Ref: WA10 1HP

Saturday 10th July
More Music
 A fantastic afternoon out at the field opposite the Black Horse pub on Moss Bank with live singing on for all the family, football tournament, tug of war, crafts, children's fairground rides, art exhibition, music dancing and much, much more.
 Time: 12 noon
 Cost: Free
 Sat Nav Ref: WA11 7DF

Family Fun Day
 A range of stalls and attractions at this traditional style Family Fun Day is to be held at Ruskell Leisure Centre on Ruskin Drive in Ormskirk for two local children, just off the Ormskirk Foundation and the Millennium Centre.
 Time: 12 noon
 Cost: 50p per session
 Contact: 01744 675132
 Sat Nav Ref: WA10 8DF

Brown Lodge Gala
 Brook Lodge Community Primary School's annual summer gala takes place at the school on Rufford, near Rainford.
 Time: 1.30pm
 Admission: 50p
 Sat Nav Ref: WA11 8JX

Sunday 11th July
Taylor Park Festival
 This fun, free annual festival is hosted by Friends of Taylor Park and is going to be a great afternoon for the family. Attractions include: stalls, games, children's entertainment, rides and the Bushbuckles room will be serving refreshments too.
 Time: 1pm
 Admission: Free
 Contact: 01744 752696
 Sat Nav Ref: WA13 3KJ

Wednesday 14th July
Black Horse and Binning Walk
 Progress leads a 2 hour walk through the countryside of Binning and Moss Bank. Please wear suitable clothing and footwear. Meet at the back of the Black Horse pub on Moss Bank Road. Also taking place on Wednesday 28th July at the same time.
 Time: 10.30am
 Cost: Free
 Sat Nav Ref: WA11 1WF

Thursday 15th July
Summer Fair
 St Teresa's School annual summer fair takes place at the school in Devon Street in St Helens.
 Time: 2pm
 Admission: Free
 Sat Nav Ref: WA10 4HX

Friday 16th July
On the Waterfront
 A maritime celebration held at Albert Docks in Liverpool until Sunday 18th July and consisting of cutting edge visual displays. Pianos, piped set and performance, giant sand sculptures and pirate adventures.
 Time: 11am-10pm. Cost: Free
 Contact: www.liverpool.gov.uk
 Sat Nav Ref: L3 1TT

38 Local Life

www.locallife247.co.uk

www.locallife247.co.uk

Local Life 39

Sample Advertising Rates

1/10th page	68mm x 37mm	from £30
1/5th page	68mm x 76mm	from £56
1/2 page	68mm x 193mm	from £124
Full page	140mm x 193mm	from £188

Other sizes & prices available on request.

For more details call 01744 649722 or 01695 627999

Payment terms

All costs shown above are exclusive of VAT. Payments can be made by monthly standing order over the entire period of the booking, by cheque or by BACS.

Artwork

Artwork will be received by the copy deadline as published on our website www.locallife247.co.uk and should be supplied to the exact dimensions booked. Artwork should be emailed to artwork@locallife247.co.uk as a high resolution PDF, TIFF, EPS or JPEG.

Leaflets

Local Life has a highly effective leaflet distribution network which can precisely target your leaflets to specific areas or postcode sectors within the St Helens and Wigan areas. We distribute a maximum of just three leaflets alongside our magazines in any one area. Prices start from £25 per thousand. Call us now on 01744 649722 or 01695 627999 for further information.

What our clients say...

How successful is advertising in Local Life? It's the only advertising that I do and it's been that successful that I've had to put a temporary hold on advertising in the magazine because I'm now fully booked until next year! The Local Life team have worked hard to put my business on the map, and I would recommend the magazine to any potential advertiser, because it works!

Chris Smith (www.christhebuilder.com)

Aubergine has been advertising with Local Life since the magazine started, and the magazine has played a big part in helping us establish a successful business. Readers now come from miles around to shop with us. It is, and continues to be, the most successful form of advertising we've ever done.

Nicola Edwards (www.aubergineladadieswear.co.uk)

Since opening our kitchen and bathroom showroom last August in Billinge, we've used various forms of advertising and nothing we've done in other publications comes anywhere near to the success we've enjoyed, both in the St Helens and Wigan areas, from Local Life magazines.

Damien Doherty (www.derevedesigns.com)

I've only now found a chance to write and say thanks; the food review you published has literally had an instant affect, with us achieving our best turnover to date last week and I strongly feel that we owe most of it to your magazine.

Simon Cowie (www.thebeaconatdalton.co.uk)

Manor House Carpet and Upholstery Cleaners have dealt with Local Life since its launch over three years ago and we've always been very happy with the response rates from the magazine. I know from personal experience that the magazine is very well liked by its readers and tends to stick around long after the local papers have hit the recycled bin.

Bob McWilliam (www.manorhousecleaning.co.uk)

CITROEN'S DSTINY

Citroen looks to its past reputation for future thinking with the DS3 supermini.
Steve Walker reports.

The DS3 is a Citroen supermini and the first treatment in the manufacturer's DS sub-range. We're going to take a whole catalogue of Citroen taking the DS brand name that first appeared in the 1950s on one of the most iconic cars of the 20th century, and attempting to re-imagine that model's sense of progress and excitement for the modern era. It's a big ask. But if Citroen can replicate even a fraction of the future that surrounded the original DS, it will be on a winner. Reconciling the impact the DS had would be an all but impossible task for the DS3. But Citroen is looking to capture the same spirit of innovation and looks to have a fighting chance.

Now, the DS3 is quite a sight. The basic shape of the car is traditional supermini with gentle curves marking its contours and a rounded cut to the corners producing a neat, purposeful silhouette. The roofline, however, is its real treat. From that slant it's 60-degree and the corresponding panel provides a series of LED running lights that mark the front corners and the DS3's futuristic air conditioning. At the back of the concept car, but Citroen has cut it and you can buy it.

For a modern supermini, the DS3 is relatively compact (it's 3600mm long and 1710mm wide, which is similar to the Ford Fiesta). The manufacturer claims there's room for five adults with luggage in the rear, enhanced by the slender backs of the front seats.

All services by experienced ex-Merco and ex-Infiniti technicians.

You pay a fraction of main dealer service costs.

Free pick up and drop off service.

All repairs, exhausts, tyres, clutches, diagnostics, MOT work etc.



10 Bradford Road, Billinge
01744 89553 or 07918 11829

www.locallife247.co.uk

The Sunshine Islands

The summer holidays are just round the corner and if you enjoy soaking your holiday by the beach you'll find that the most comfortable vacation does not, you'll find it in the heart of the city!

Looking for inspiration? What about a holiday location that boasts stunning city, beautiful beaches and a vast range of resorts offering everything from laid back family fun to sophisticated business and corporate nightlife. And best of all you're only 2 hours away from St. Paul's! Well, it's all waiting for you at the Sunshine Islands a quick random on what you can expect from the Sunshine Islands!

Majorca
Majorca is San Phedro's 11th of perfect white sands, combined with a choice of restaurants and bars have a perfect choice for families and couples looking for a holiday with a relaxed pace and a great market to explore.
The east Coast resorts of Cala Dor and Cala Egas are some of Majorca's prettiest resorts. Cala Dor's marina, bars and cafes lend a lively feel to this family friendly resort. Majorca is an peaceful and exclusive

resort where couples will enjoy the small beaches and good links into the wonderful city of Palma.

The south coast resorts of Santa Ponsa, Palma Nova and Magaluf all boast wonderful sandy beaches, activities and legendary nightlife that truly offer something for everyone.

Ibiza
San Antonio and San Antonio Bay boast a wonderful sandy beach and activities to keep kids of all ages entertained by day. By night, San Antonio lives up to its reputation as a mecca for partygoers, with all night San Antonio Bay has a more family friendly feel.
On the east coast the cosmopolitan resort of Santa Eulalia has a great choice of restaurants and bars, complemented by sandy beaches and marinas. Es Cana on a pretty bay and a home to luxury villas. Ibiza is a big market as well as a choice of lively bars in the evening. Phoenicia Playa is the island has a choice of water sports on its sandy beach, beautiful weather and is perfect for children.

24 Travel brought to you in association with Merken Travel



Flamingo Jazz

15 Trenton Church, based in College Road in Lip Holland, are holding a Piano Bar and Coffee Morning next Saturday (20th June) at St Teresa's Hall, which is next to the church on College Rd. The event runs from 10am-1pm and entry is free. A great selection of plants will be offered for sale and there will be some delicious home made cakes to sample and lots of other attractions too. All proceeds go to church funds.

Compare the Market

There are two local farmers markets being held this Saturday (10th June) and also next month on Saturday 17th July. The first is held at the community centre on Apple Lane North in Appleton Bridge and this long established market sells organic vegetables, plants, crafts, breads, cakes, clothes, news, jams, chutneys and pies and all products is guaranteed to be local produce. The market opens at 10am.

The second market runs from 9.30am-1pm and is held at Fir Tree Farm in Kyrby Moss near Billinge. A wide variety of regional and locally sourced fresh produce is on sale, including home made pies and hand made chocolates. There's a table a sale at Fir Tree Farm where you can sit down and have a cuppa and a bit of cake if the going gets too hot!

Blue Water Travel
Specialist in organising holidays
• Airport transfers (on the coast)
• Sporting Events
• Party Nights Out
• Golf Trips
• Weddings
• Contract Work
• Any Distance
• Car Seats Provided
N. 12 & 12 Street, Mablethorpe
Telephone 01695 833358
www.bluewatertravel.co.uk

Sale now on!
Up to 70% off selected items

Gorgeous summer outfits for that special occasion;

- ★ Holidays
- ★ Weddings
- ★ Cruises
- ★ Summer balls
- ★ Garden Parties

Aubergine
721 Ormskirk Place, Pemberton
Free parking all day long
Call - 01542 212520
www.auberginewedding.co.uk
©2007 Hestonley

www.locallife247.co.uk

Distribution Coverage

Wigan North

Standish
Shevington
Parbold & Newburgh
Appley Bridge
Whitley & Wigan Lane
Wrightington

Wigan West

Orrell
Billinge Higher End
Winstanley
Up Holland
Marus Bridge
Highfield

St Helens East

Rainford
Billinge
Newton-le-Willows
Garswood
Ashton-in-Makerfield
Moss Bank

St Helens West

Rainhill
Eccleston
Windle
Eccleston Park
Prescot
Nutgrove

The Wigan and St Helens editions are published monthly and distributed to each of the above areas on an alternate monthly basis. The print run for the Wigan title is 14,600 copies and the print run for the St Helens title is 14,000 copies. The Postcode sector distribution figures, along with a full publication schedule are available on our website www.locallife247.co.uk.

